

Dear Colleagues,

The sunny beautiful season in which we spend more time in nature is here, along with the ticks.

For some years now, tropical *Hyalomma* ticks have also been native to our region, in addition to the local Auwald tick. They are much larger than the normal native wood ticks and can grow up to two centimetres long. *Hyalomma* ticks are spider-like, fast and active hunters. They can see as far as ten meters and track their victim for several hundred meters.

Rickettsia has been detected in half of the *Hyalomma* ticks found in Germany.

If you or your patients are bitten by a tick, we offer a tick test. This allows you to quickly and reliably check whether the tick was infected with pathogens using a PCR method, and to act swiftly if necessary.

We test for the following pathogens:

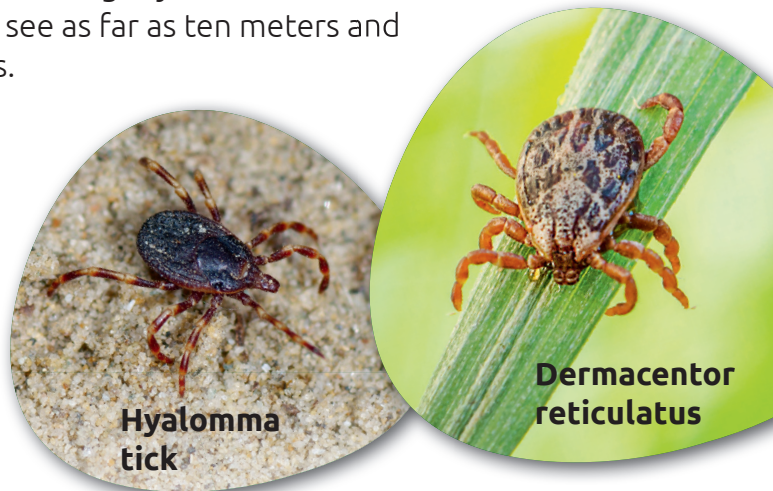
- » *Borrelia burgdorferi sensu lato*
- » *Borrelia miyamotoi*
- » Tick-borne encephalitis (TBE)
- » *Anaplasma phagocytophilum*
- » Babesia
- » Bartonella
- » Rickettsia

Upon request, we will be happy to send you our laboratory order form and further information. Please send the tick directly to our laboratory in the enclosed bag.

If you have any questions, please do not hesitate to contact us.

Best regards

Your ArminLabs Team



Hyalomma tick

Dermacentor reticulatus